



Impacts of Public-Public Partnerships - expectations and experiences

Session #1: impacts at policy & network level

Name of network/organisation: BiodivERsA



Name of presenter: Xavier LE ROUX

Annual Joint Programming Conference
23 November 2016

Challenge tackled by BiodivERsA:

- Unsustainable activities and land management → **increased degradation of biodiversity and ecosystem services...
...with a rising cost for European societies**
- A need to develop science-based approaches to better **preserve and sustainably use biodiversity...**
...and to **develop Nature-based solutions while promoting European innovation & competitiveness**

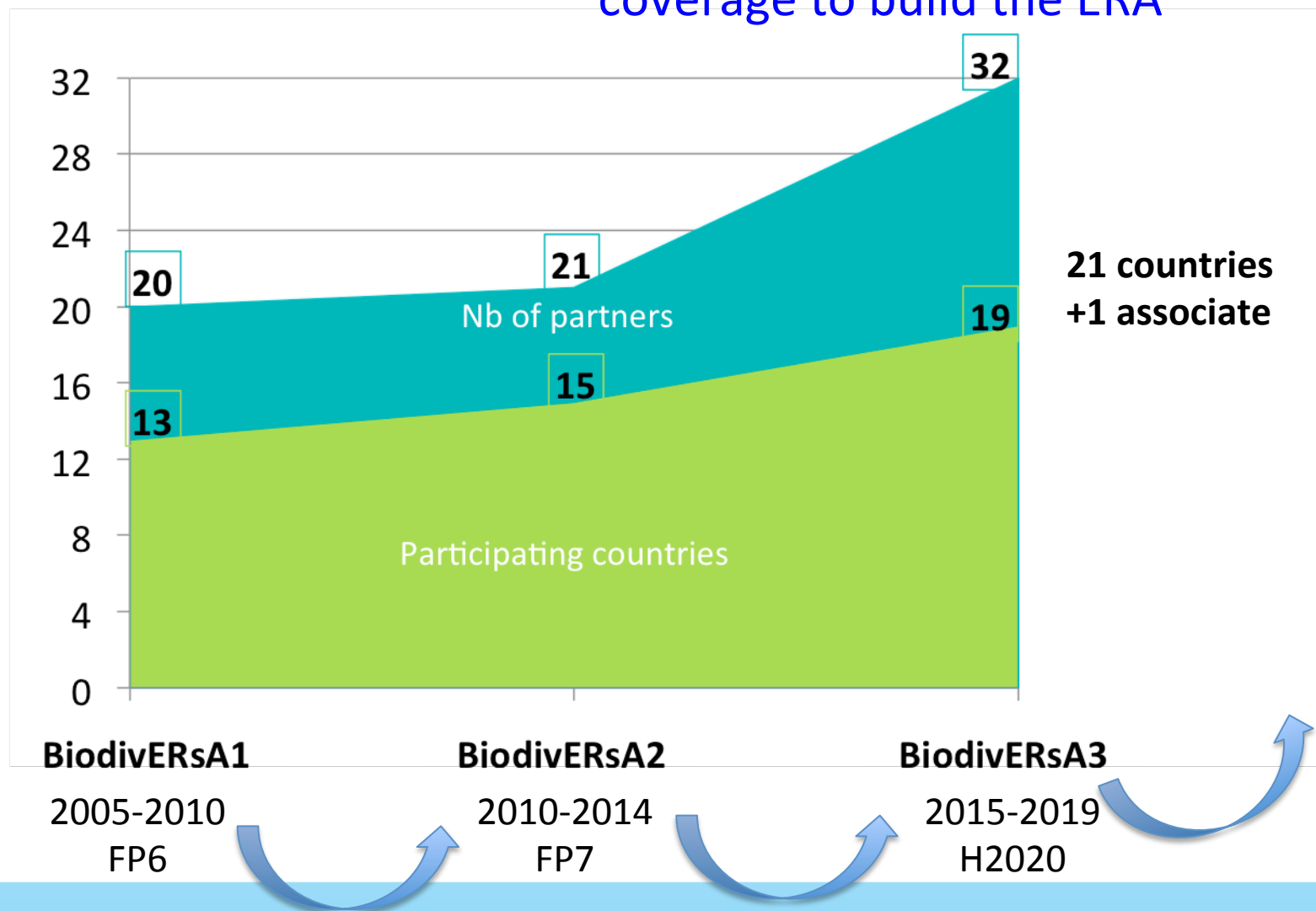
Effective response to this challenge => required improvements in relation to policy:

- More coordinated research efforts
- Reduced duplication and fragmentation of research activities
- Promotion of a more systemic and trans-disciplinary research, bridging the gap between R&I

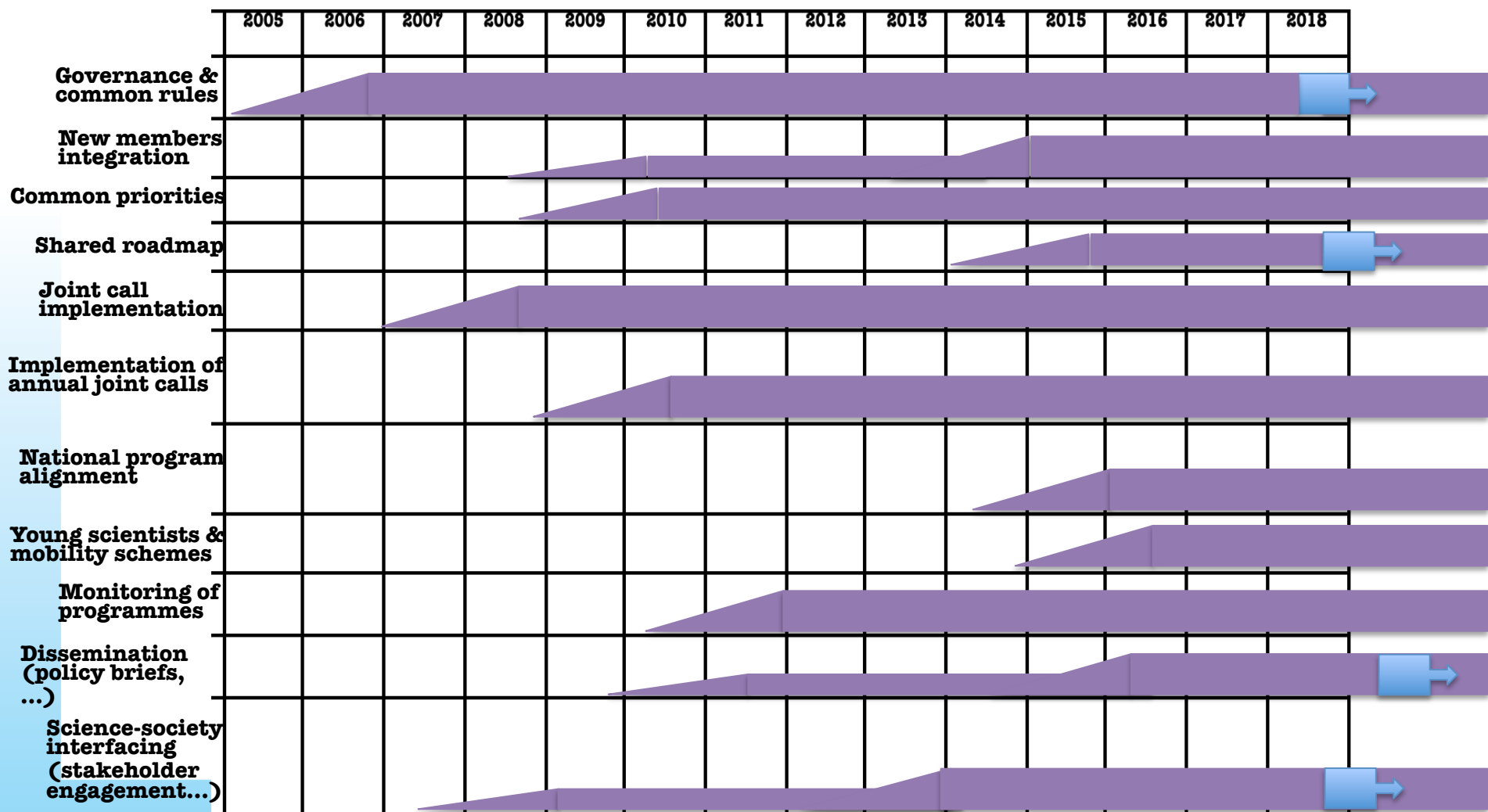
Specific requirements in relation to the very scientific area addressed :

- Promoting the linkages between natural and social sciences
- Stimulating a research that considers threats but works on solutions
- Promoting stakeholder engagement throughout the whole research process
- Stimulating closer links between research and business, and research and innovation

Enduring connectivity: better coverage to build the ERA



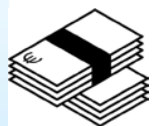
Enduring connectivity: addressing a range of issues key to Joint Programming



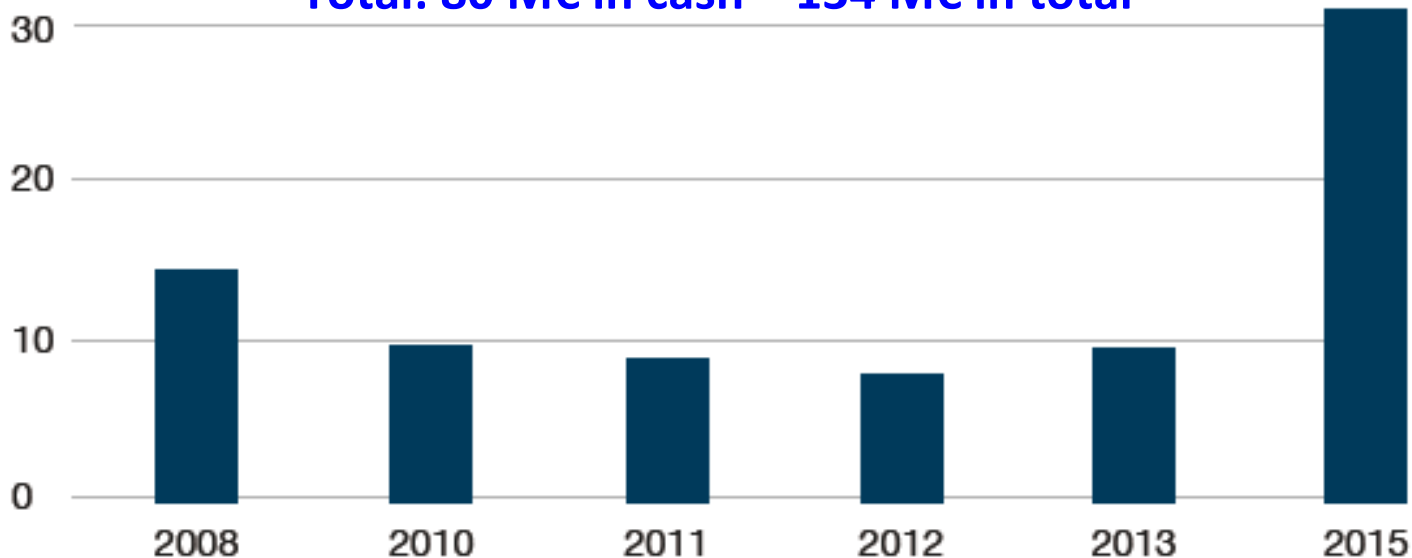
Capacity building → efficiency of a large and diverse network

- Staff exchanges & ad hoc activities for new members
- Integration of 'low performing' countries & the overseas

→ nearly annual joint calls ; ambitious calls with high critical mass
Total: 80 M€ in cash – 134 M€ in total



Funding amount (M€)

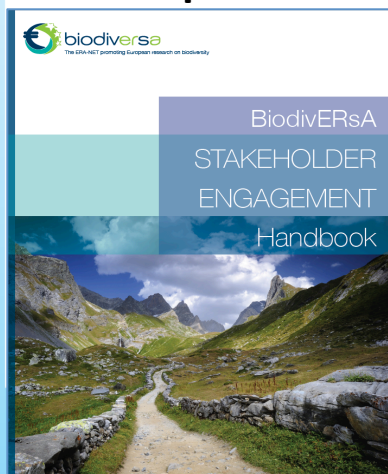


Attitudinal/cultural change →
agreement on a new type of research
that we should promote

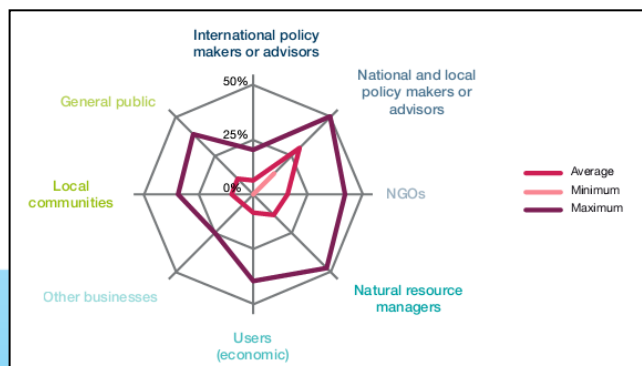
Blue sky research ←  → Applied research

**Innovative & successful
approach for promoting
stakeholder engagement**

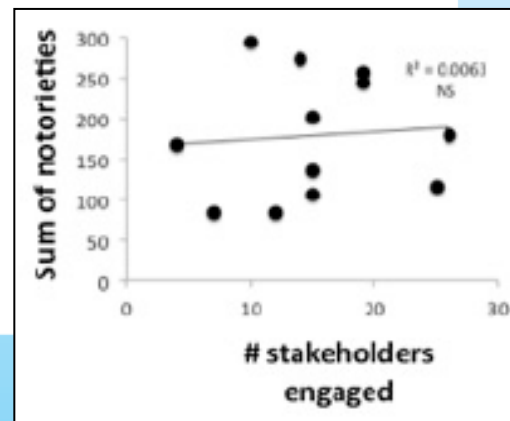
Tools to help researchers



Actual stakeholder engagement



**No trade-off between
academic excellence &
SH engagement**



Conceptual impact → agreed new way to envisage the challenge that we have to tackle

Threats - Biodiversity conservation



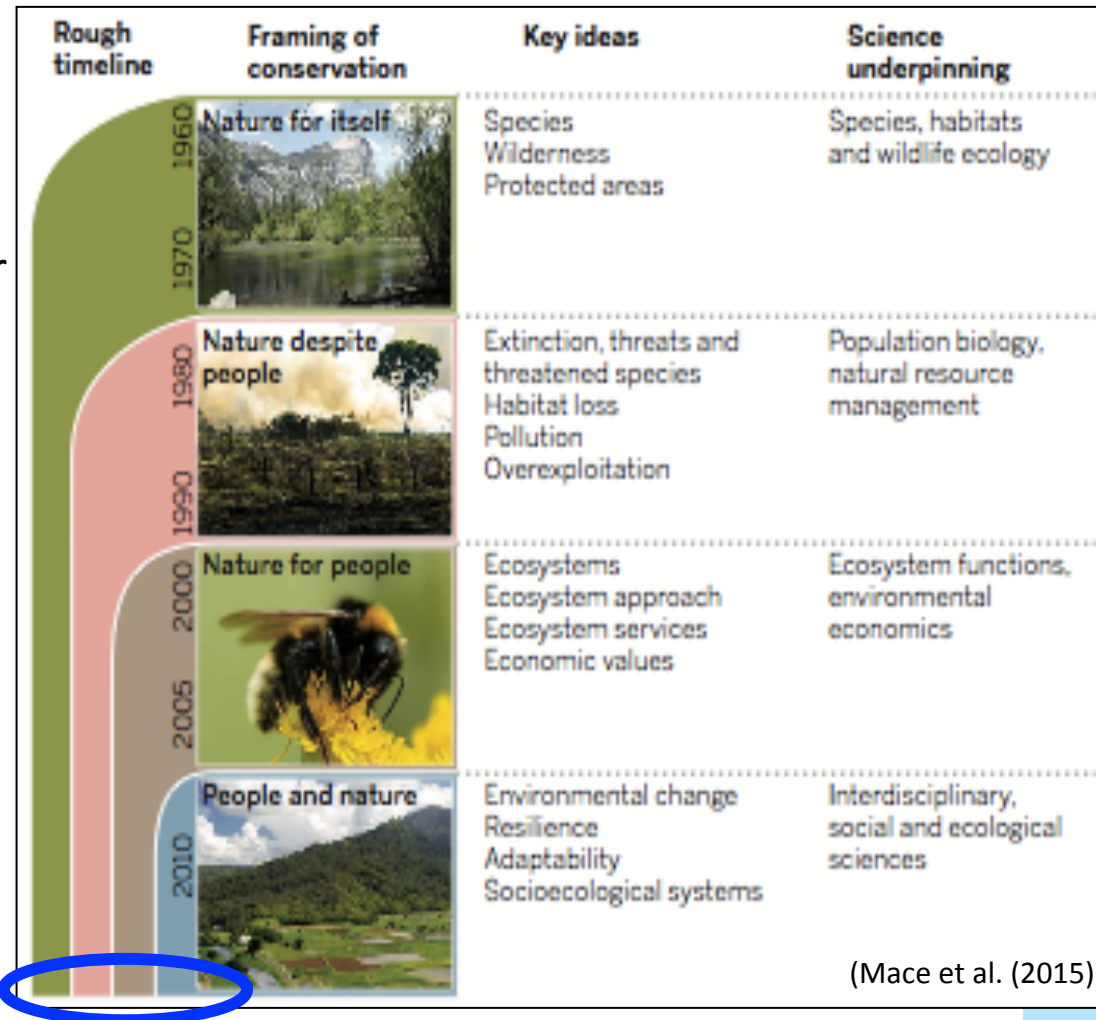
Use of biodiversity & ecosystem services

Our challenge =
Biodiversity & Nature-
based solutions

Vision and key challenges → the BiodivERsA SRIA

Biodiversity = multiple stakeholders...
...with contrasted views

- Biodiversity characterisation ; understanding its dynamics under global change; conservation
- Biodiversity: an asset for ecosystem services ; promoting multifunctionality and resilience
- Biodiversity as an asset for Nature-based solutions



BiodivERsa SRIA = bridges the gap between these different views and challenges

This required foresight activities, particularly on the emerging concept of Nature-based solutions

243

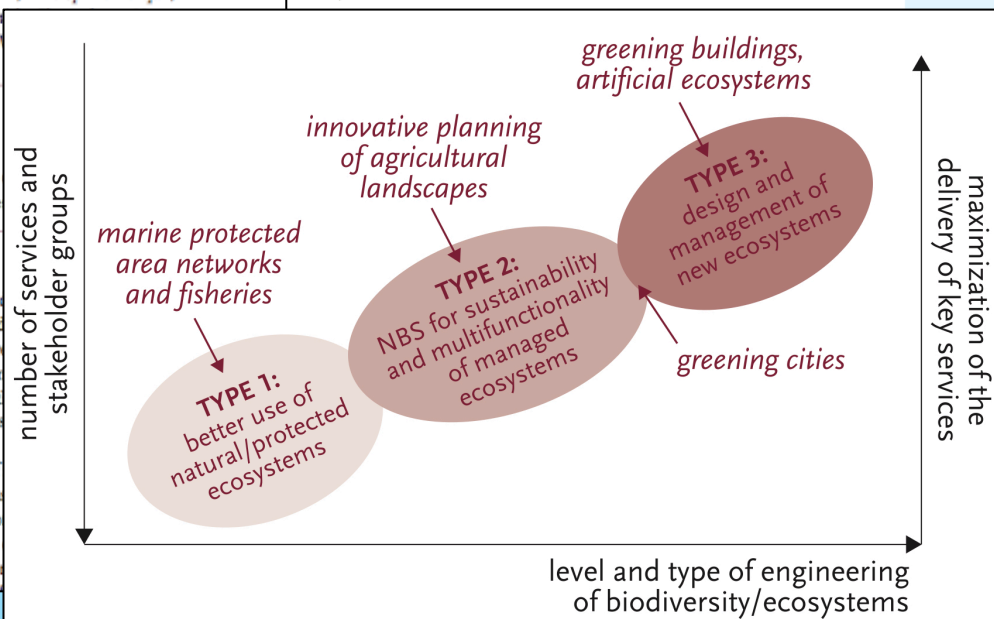
Nature-based Solutions: New Influence for Environmental Management and Research in Europe

Greening roofs or walls to cool down city areas during summer, to capture storm water, to abate pollution, and to increase human well-being while enhancing biodiversity: nature-based solutions (NBS) refer to the sustainable management and use of nature for tackling societal challenges. Building on and complementing traditional biodiversity conservation and management strategies, NBS integrate science, policy, and practice and create biodiversity benefits in terms of diverse, well-managed ecosystems.

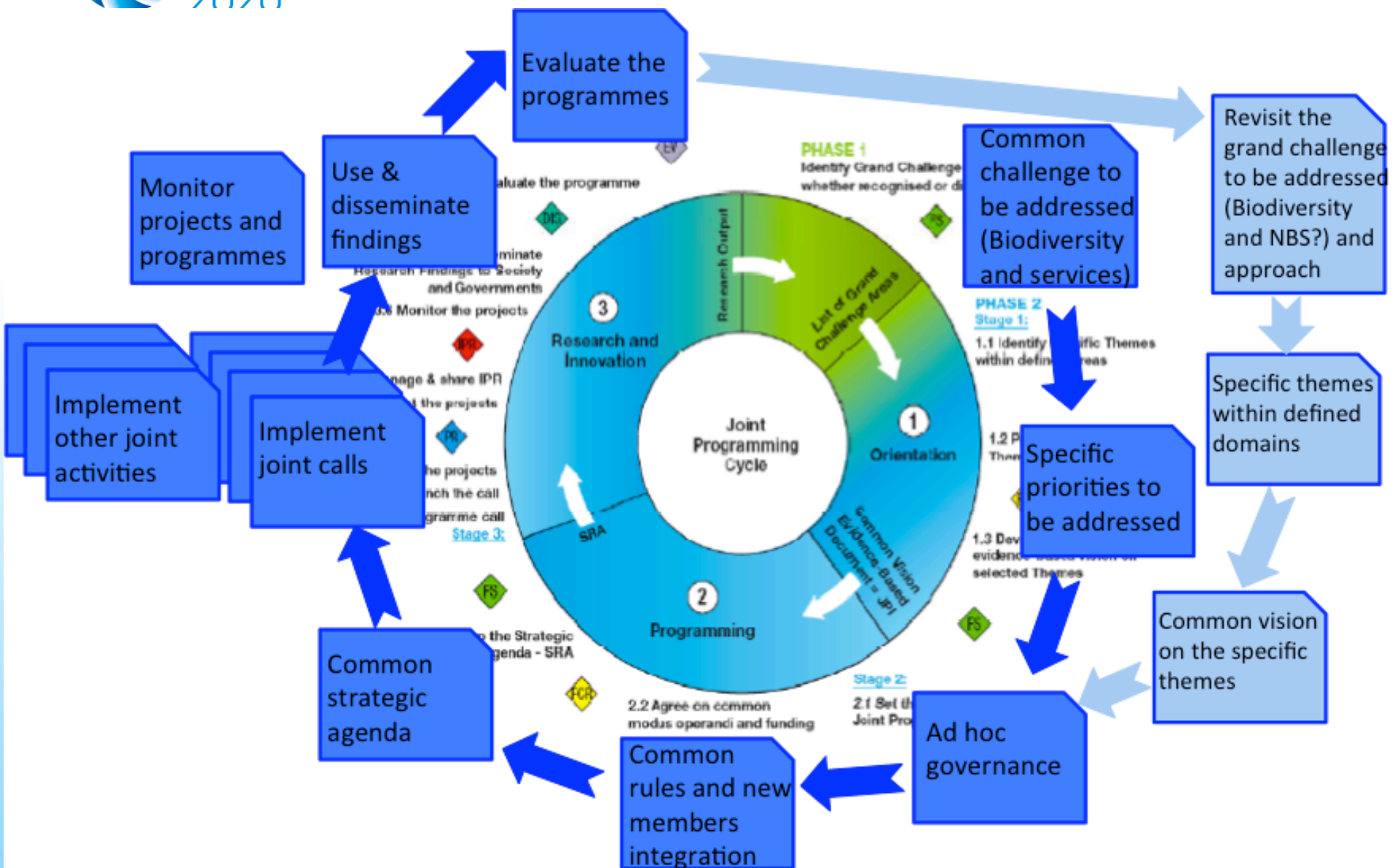
Hilde Eggermont, Estelle Balian, José Manuel N. Azevedo, Victor Beumer, Tomas Brodin, Joachim Claudet, Bruno Fady, Martin Grube, Hans Keune, Penelope Lamarque, Katrin Reuter, Matt Sm, Wolfgang W.



Co-produced by
scientists, funders
and stakeholders



... which led to revisiting the challenge tackled by BiodivERsA



- BiodivERsA : progressive change in the mind-set of BiodivERsA partners about the importance of this research area + type of research to be promoted
- Approaches used to maximise impact :
 - Cooperation with other stakeholders (joint calls with JPI-FACCE & Belmont Forum ; links with other JPIs, coll. with EKLIPSE & ThinkNature)
- Suggestion for future support :

The CO-FUND tool now becomes limiting for strategic activities, incl. programme alignment → evolution needed
- The proposed evaluation framework captures well the various impacts...
... but could better address the crossroad between network and project levels

BiodivERsA network impact = also ad hoc actions to enhance funded projects' impact (e.g., Policy briefs ; results feeding IPBES assessments ; ...)